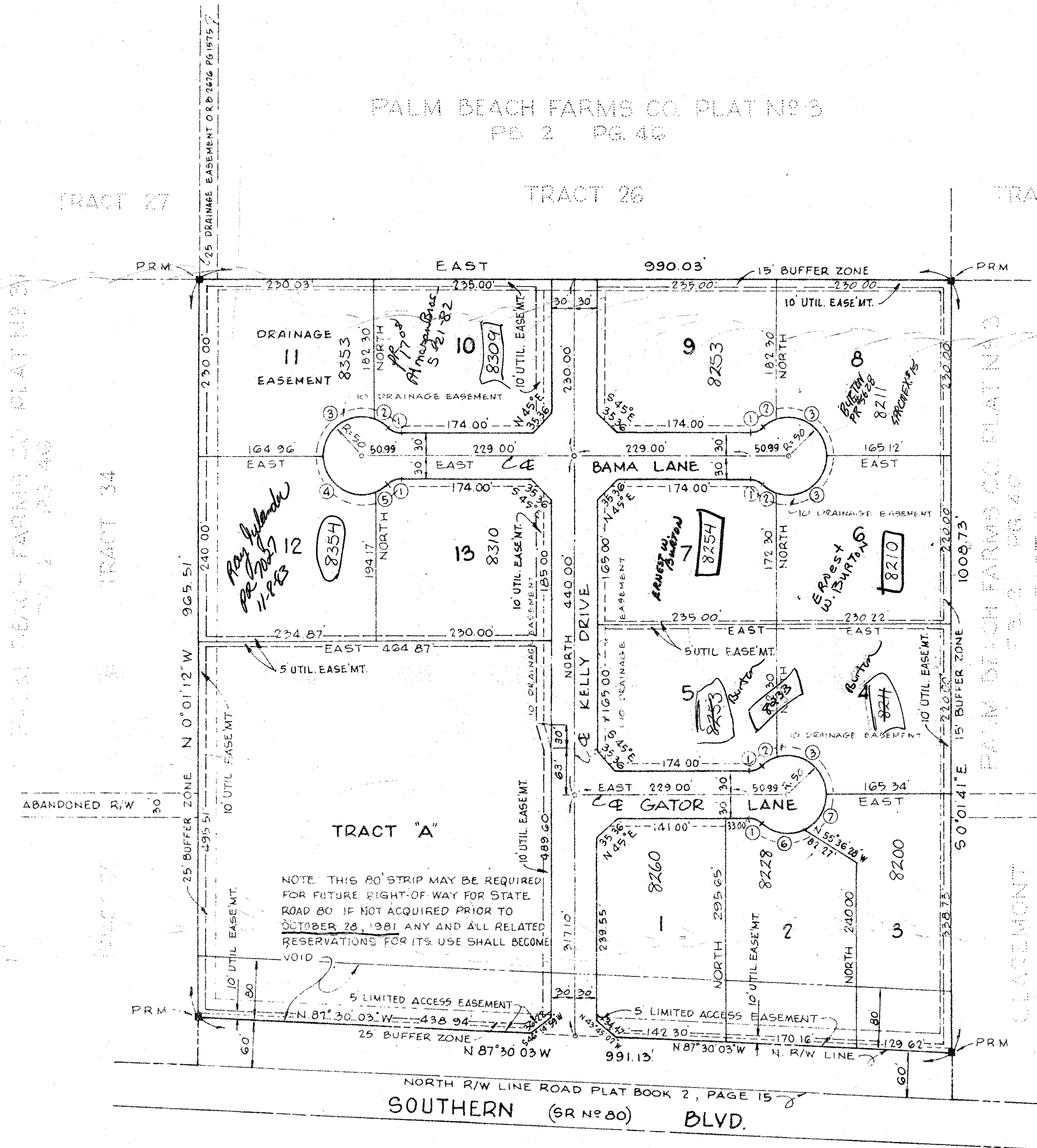


PONDEROSA INDUSTRIAL PARK

(A PLANNED INDUSTRIAL DEVELOPMENT)
 IN SECTION 32, TOWNSHIP 43 SOUTH, RANGE 42 EAST, PALM BEACH COUNTY, FLORIDA
 BEING A REPLAT OF TRACT 35 AND A PORTION OF TRACT 38, BLOCK 7
 PALM BEACH FARMS CO. PLAT NO. 3 RECORDED IN PLAT BOOK 2, PAGE 46

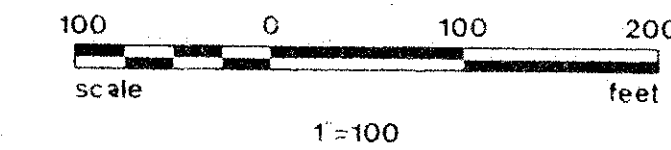
114

IN 2 SHEETS SHEET NO. 2
 SEPTEMBER 1977



CURVE DATA

	RADIUS	CENTRAL ANGLE	ARC
1	25.00'	42° 50' 00"	18.69'
2	50.00'	25° 23' 16"	22.16'
3	50.00'	107° 26' 44"	93.76'
4	50.00'	113° 33' 56"	99.11'
5	50.00'	19° 16' 03"	16.81'
6	50.00'	64° 04' 42"	55.92'
7	50.00'	68° 45' 18"	60.00'



APPROVALS

BOARD OF COUNTY COMMISSIONERS
 OF PALM BEACH COUNTY, FLORIDA

This plat is hereby approved for record this 11th
 day of April, 1977.

BY: Bill Raiter
 Vice Chairman

ATTEST:

JOHN B. DUNKLE, CLERK

BY: Margie B. Jennings
 Deputy Clerk

COUNTY ENGINEER:

This plat is hereby approved for record this 11
 day of April, 1977.

BY: H. F. Kohler
 County Engineer

NOTE:
 THIS IS A PLANNED
 INDUSTRIAL PARK UNDER
 SPECIAL EXCEPTION - EACH
 INDIVIDUAL LOT MUST HAVE
 APPROVAL OF THE SITE PLAN
 REVIEW COMMITTEE

1000-112 **46**

SURVEYOR'S CERTIFICATE

THIS IS TO CERTIFY THAT THE PLAT SHOWN HEREON IS A TRUE AND CORRECT REPRESENTATION OF A SURVEY MADE UNDER MY RESPONSIBLE DIRECTION AND SUPERVISION AND THAT SAID SURVEY IS ACCURATE TO THE BEST OF MY KNOWLEDGE AND BELIEF AND THAT (P.R.M.'S) PERMANENT REFERENCE MONUMENTS AND (P.C.P.'S) PERMANENT CONTROL POINTS HAVE BEEN PLACED AS REQUIRED BY LAW AND FURTHER THAT THE SURVEY DATA COMPLIES WITH ALL THE REQUIREMENTS OF CHAPTER 177 FLORIDA STATUTES, AS AMENDED, AND ORDINANCES OF PALM BEACH COUNTY, FLORIDA.

REGISTERED SURVEYOR NO. 1552
 STATE OF FLORIDA

NOTES:

- = PERMANENT REFERENCE MONUMENT (P.R.M.)
- = PERMANENT CONTROL POINT (P.C.P.)

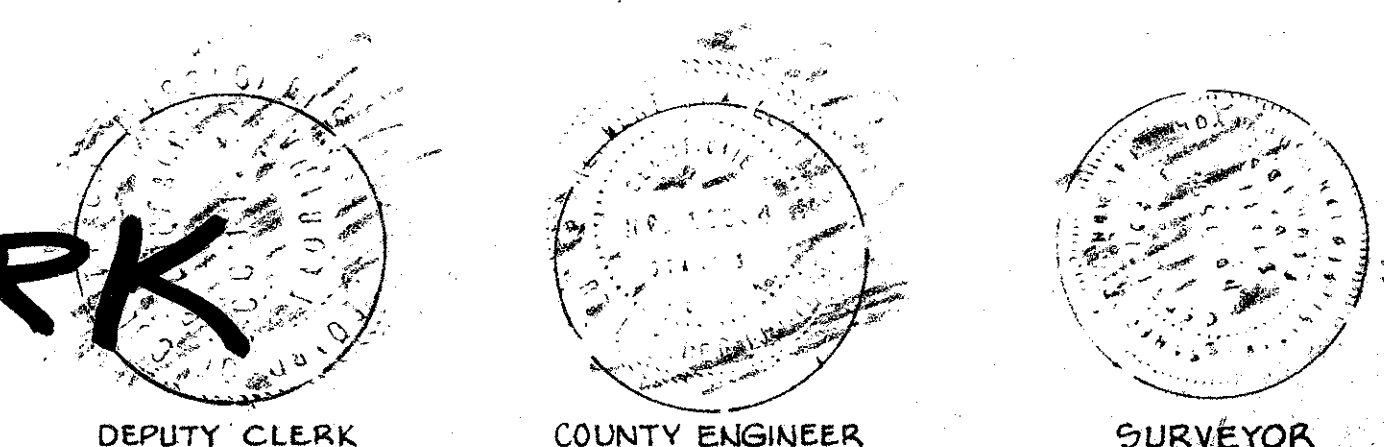
BEARING REFERENCE:

THE NORTHERLY LINE OF TRACT 35 ASSUMED TO BEAR EAST

THERE SHALL BE NO BUILDINGS OR STRUCTURES PLACED ON UTILITY EASEMENTS.
 THERE SHALL NOT BE ANY TYPE OF CONSTRUCTION OR THE PLANTING OF TREES OR SHRUBS ON DRAINAGE EASEMENTS.

PONDEROSA INDUST. PARK

32/43/42



QUAD
 46

34
 114